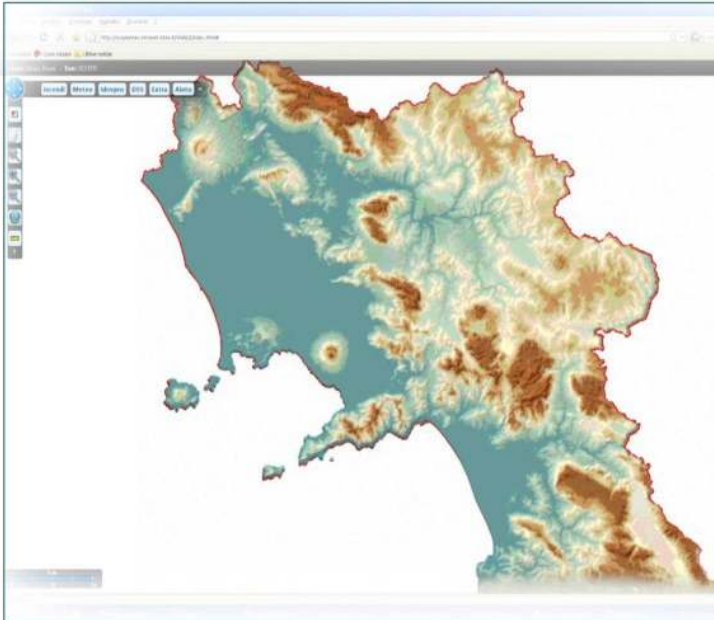




# SMA

## GRUPPO INTINI



## SMA WILDFIRE

### TECHNOLOGIES AND COMPETENCE FOR WILDLAND FIREFIGHTING & TERRITORY MANAGEMENT



#### ■ SMA WILDFIRE - Integrated technologies and solutions for the monitoring and protection of wildland & forests, and for the territory management

S.M.A. Spa supports firefighting agencies onsite by providing a full package of integrated technologies, solutions and services for the management of the entire process aimed to preserve wildland & forest and to protect individuals and their properties.

Either as part of a multi-year contract or on-demand, S.M.A. Spa is capable of deploying straight on the operations field skilled firefighting staff, fire and multi-purpose vehicles, and cutting-edge IT technologies of which it supervises all operational, logistic and maintenance aspects as well as the long-term technological upgrade.

All S.M.A. Spa services are backed up by solid R&D and engineering competences with regards to prediction, in order to identify causes and occurrence probability of events - prevention, by proper forest maintenance to reduce risks - mitigation, by deploying effective

firefighting actions - recovery, by specific short/medium/long term restoration management packages - pre-fire and emergency planning, by integrating territory data, risk scenarios modelling, operational processes and strategic plans objectives. SMA SpA solutions take care both of territory structure and functions, providing tools for change control and management.

#### TECHNOLOGIES

S.M.A. Spa supplies, installs, and directly manages - in full coordination with the Client on both contract and on-

demand basis - the equipment, the vehicles and the systems provided for the activities of prevention, monitoring and fighting of the wildland and forest fires. Most of such technological resources are designed and manufactured by S.M.A. Spa itself in accordance with the operational and working specifications of the Client, then also taking care of their efficiency, maintenance and upgrade.

#### Fire detection systems

Electronic systems for detection and monitoring of wildland and forest fires



through visual and infrared scanning. These units are installed on either elevated masts or mobile units, and ensure a non-stop flow of video and data to the control rooms to supervise the territory and to process affordable propagation models.

#### **Weather, flooding and landslide monitoring**

Fixed and mobile monitoring networks, including radars, weather and waters stations and IT processing systems based on specific up-to-date forecast modelling. Web portals support access to the prediction results to achieve for affordable weather forecast as well as for dynamic hazards mapping.

#### **Firefighting vehicles and equipment**

Off-road fire tenders are based on both light and heavy vehicles.

Firefighting and logistic equipment, as well as the personal protective equipment are developed in collaboration with leading manufacturers. Maintenance and upgrade of all equipment and vehicles is included.

#### **DSS - DECISION SUPPORT SYSTEMS**

S.M.A. Spa designs, produces, installs and directly manages the entire hardware & software structure for the management of the whole wildland/forest protection cycle - prediction / prevention / mitigation / recovery. At its core, the DSS - Decision Support System, a complex dynamic integrated IT system that thanks to the analysis of distributed sensors and GIS data allows the integration of all data and supports the development of operational strategies and tactical decisions in alarm situations, contributing to reduce the danger of the state of emergency and the response times.

#### **Fixed and mobile control rooms**

They are installed either at fixed locations or into mobile shelters fitted to off-road vehicles. They gather all equipment for data collection and processing, communication and management thus becoming the supervision centre for all protection and fire fighting operations.



#### **Prediction modelling**

Amongst those available at this time being:

- fire propagation
- weather forecast
- nowcasting
- flooding and landslide

#### **GIS mapping**

Advanced data processing systems for the most detailed and flexible GIS mapping purposes to support the DSS functions. Up-to-date voice and data communication equipment is also included. Services include post-event mapping of the update of the burnt areas archives as well as of the DSS modelling databases.

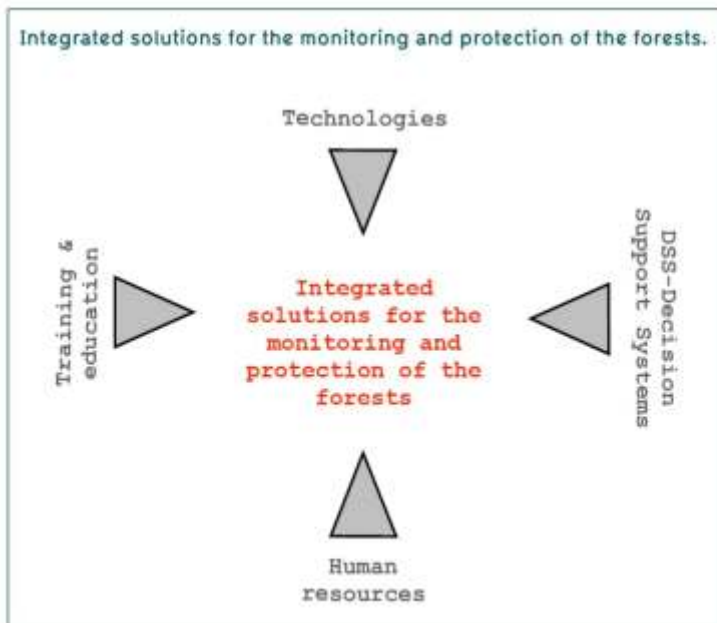
#### **HUMAN RESOURCES**

S.M.A. Spa is capable of directly managing a limitless number of forest maintenance workers and firefighting personnel and taking care about their training as well as of all related administrative and account aspects. Staff includes all profiles as required by the prospective contracted job, while additional collaborations and partnerships with field experts and universities are effective to ensure the most recent scientific background.



GRUPPO INTINI

www.gruppointini.com



### Operations managers

These include the control rooms operators and managers, who are responsible for coordination of all field activities.

### Firefighting personnel

Fire crews are made of staff of all rankings. They provide excellent firefighting competence and experience, and can meet all specific operational requirements thanks to the wide range of technical qualifications achieved.

### Staff for logistics and general management

Personnel and managers take care of all administrative, accounts and maintenance facets to ensure an affordable and precise industrial and financial audit. They also look after safety issue regarding personnel and their equipment.

### Doctor forest

SMA SpA has highly qualified personnel in environmental, capable of planning and designing interventions to defend and to improve hydraulic and forestry heritage.

### TRAINING AND EDUCATION

S.M.A. Spa works closely with other companies of the Intini Group to design and put into operation a wide array of added-value services intended to complete the on-field operations as well as to provide population with educational means to enhance their attitude to safety as well as their respect to the forests.

#### Training

Professional firefighting training supplied by mobile fire simulators & virtual training systems.

### Web services for operations support

Web data sharing and data delivery infrastructures for the real-time processing and management of the ongoing event.

### Alert web services

Web platforms for population alert and evacuation purposes.

### Satellite and web television services

Satellite and web infrastructures for the editing, post-production and broadcast on both SKY887 satellite channel and administra.it web-TV to increase population

GRUPPO INTINI

www.gruppointini.com





knowledge and attitude respectful of the protection of forests as well as of their commitment in the voluntary associations.

#### Improving Safety Education

Design and management of ground-breaking, amusing educational routes intended to enhance school population's culture of safety, to make them sensitive on the impact of forests on the planet and to instill respect of the common good.

S.M.A. Sistemi per la Meteorologia e l'Ambiente Spa, a company of the Intini Group, designs, manufactures and manages integrated solutions and services for the protection of the territory as well as of the individuals, in order to make natural resources, sustainable growth, environment and quality of life all compatible.

S.M.A. Spa also operates in the Security & Surveillance, Homeland Security, Intelligent Transport Systems and Satellite Networking markets.

Intini Group was established more than fifty

years ago and today gathers a number of leading companies in the following sectors:

#### ■ PROTECTION

Technologies and systems for the protection of the territory

#### ■ SOURCE

Engineering and services and systems for the Facility Management

#### ■ DEVELOPMENT

General constructions

The group currently counts more than 20 companies with a turnover reaching up to 175 Mil€ and staff exceeding 3.300 collaborators.



GRUPPO INTINI

www.gruppointini.com

#### S.M.A. Sistemi per la Meteorologia e l'Ambiente S.p.A.

Società unipersonale soggetta all'attività di direzione e coordinamento di Gruppo Intini S.p.A.

Headquarters // Via Pasquini, 6 / 50100 Firenze - Italy

Offices // Via Zona Industriale / C.P.n. 154-155 / 70015 NoCI (Ba) - Italy / T +39 080 49441 / F +39 080 4979285

Registro Imprese Firenze n. iscrizione 04576350484 / REA Firenze n. 462453 / CF e P. Iva 04576350484 /

Capitale Sociale € 6.600.000,00 i.v. / smaspa@pec.it / info@intini.it / www.gruppointini.com